

ELLEDECOR

THE FASHIONABLE LIFE

TOP NEW YORK DESIGNERS AT HOME

**CAROLINA HERRERA
REED KRAKOFF
DONNA KARAN
FRANCISCO COSTA
TRACY REESE
JOSEPH ALTUZARRA
LISA PERRY**

**CAMERON DIAZ'S
ULTRA-GLAM
APARTMENT**

**RALPH LAUREN'S
CINEMATIC VISION**

**LONDON STYLE
UPDATE**



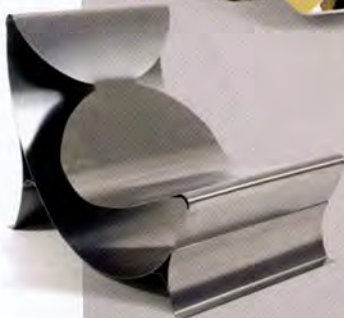
OCTOBER 2013
USA \$5.99
ELLEDECOR.COM

STYLE SHEET



WOMAN OF STEEL

Maria Pergay has one everlasting love: stainless steel. For more than five decades, the French furniture designer has rendered the unforgiving material into daring forms, such as her sculptural Lounge chair, left, from 1970. Now she is partnering with Fendi Casa on a limited-edition collection of new works, including the jagged-edge Cassé cabinet, above, and a reissue of her iconic Pouf Vague, updated with a fur seat (fendi.com).



He popularized the Breton stripe, made peroxide blond all the rage, and put Madonna in her first cone-shape bra. Since hitting the fashion scene in the 1970s, Jean Paul Gaultier has challenged nearly every rule in the book. The first museum retrospective of his work, "The Fashion World of Jean Paul Gaultier" at the Brooklyn Museum, will display more than 100 runway looks and costumes for movies and rock concerts (October 25 through February 23, 2014; brooklynmuseum.org). But Gaultier hasn't confined his work to clothing. This season, he has tailored his enfant terrible look for interiors as well, upholstering the Profile ottoman by Roche Bobois in his signature tartan (roche-bobois.com) and collaborating with Lelièvre on a fabric line that revels in his cheeky wit (starkcarpet.com).



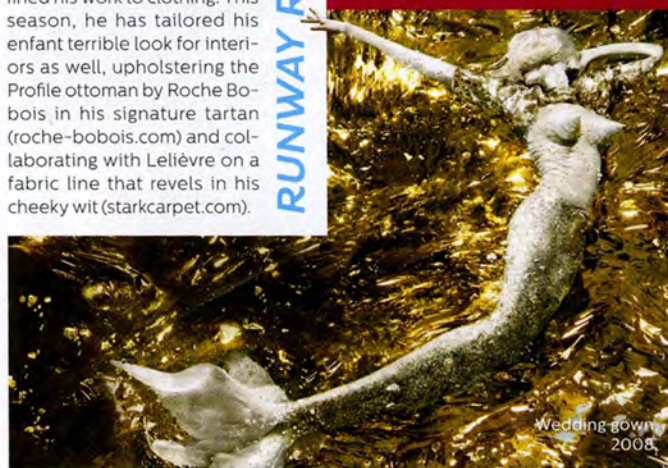
Camouflage gown, 2000.

Spatial cotton for Lelièvre.

RUNWAY REBEL



Profile ottoman by Roche Bobois.



Wedding gown, 2008.

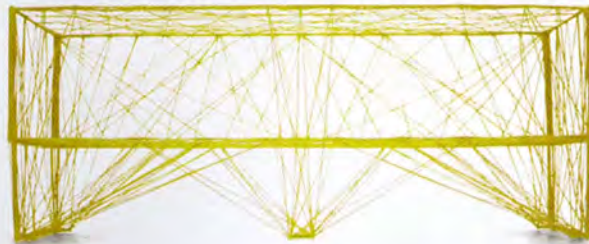
GAME CHANGERS

DANGEROUS AND POWERFUL, THE QUEEN IS CONSIDERED THE MOST VALUABLE PIECE ON THE CHESSBOARD. "A QUEEN WITHIN," AN EXHIBITION AT THE WORLD CHESS HALL OF FAME IN ST. LOUIS, MISSOURI, EXPLORES HER FABLED PERSONA—AND HER CLOSET—AS INTERPRETED BY FASHION DESIGNERS. THE SHOW RANGES FROM FAMOUS PIECES BY ALEXANDER McQUEEN AND MAISON MARTIN MARGIELA TO WILD-CARD CREATIONS BY SUCH RISING STARS AS HIDEKI SEO, RIGHT (OCTOBER 19 THROUGH APRIL 18, 2014; WORLDCHESSHOF.ORG).



CROSSING THE LINE

Furniture and fabric designers are going off the grid this season with irreverent linear motifs that veer from the straight and narrow. RP Miller's Le Witt Loom pattern, top right, resembles a scaled-down version of conceptual artist Sol Lewitt's wall drawings (rpmillerdesign.com). The haphazard squiggles of Batiste, center right, part of Doug and Gene Meyer's wallpaper line for Holland & Sherry, are an abstract take on the plaid cotton handkerchiefs their father loved (hollandandsherry.com). And Pentágono's fiberglass-and-resin Nodo console, below, nods to the gravity-defying large-scale sculptures of artist Kenneth Snelson (pentagonoestudio.mx).



PRODUCED BY HANNAH MARTIN